

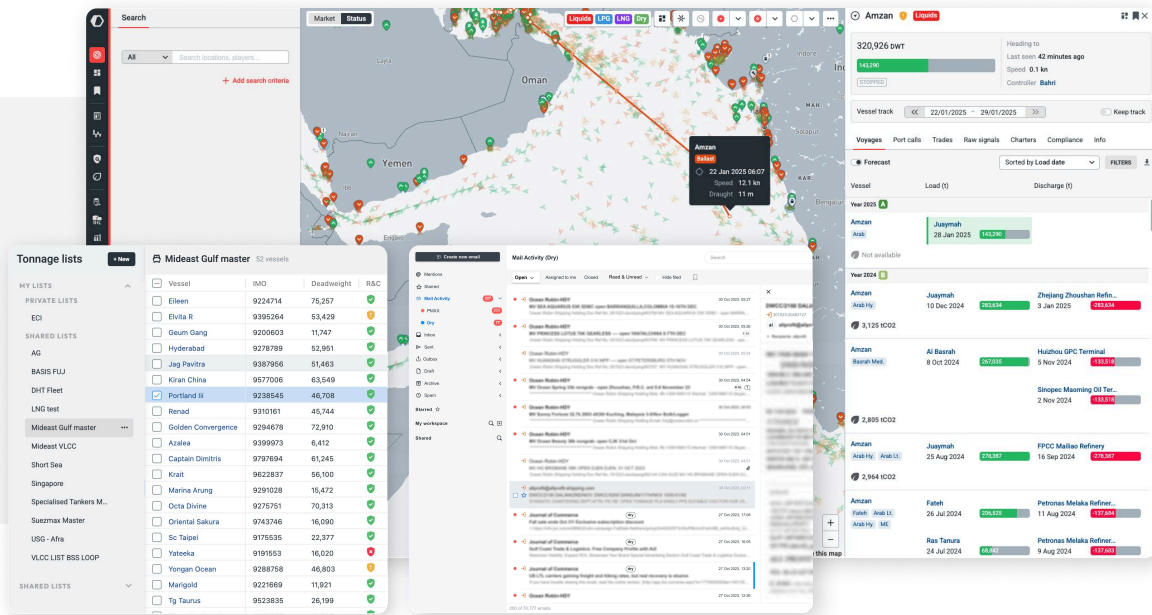
# Chartering

The smarter way to charter

Copyright 2025



# Intelligence tools for trade



Kpler's chartering product offers a unified platform to enhance productivity and speed decision-making for global shipping professionals. Designed to simplify pre-fixture processes, the product seamlessly integrates tonnage and cargo lists, vessel tracking, market fixture data, and voyage estimation into one intuitive interface.

Powered by AI, machine learning, and advanced parsing, Kpler delivers unmatched data quality, including comprehensive AIS coverage, accurate commodity flow insights, and an industry-leading email parser. The tool allows for streamlined workflows, save time, and make smarter, data-driven decisions in an ever-evolving maritime industry.

Whether you're a shipowner, charterer, or broker, Kpler's easy-to-use platform is your partner in navigating complex markets. Trusted by thousands of professionals, Kpler provides transparent, actionable intelligence that enhances collaboration, boosts operational efficiency, and keeps you ahead of the curve.



**40 commodities**  
covered



**1 billion+** AIS signals  
processed daily



**99%** email  
parsing accuracy



**2m+** trades  
monitored



**29,500+** vessels  
tracked in real time

# Tonnage list

The screenshot displays the 'Tonnage lists' application interface. On the left is a sidebar with navigation options: MY LISTS, PRIVATE LISTS (ECI), SHARED LISTS (AG, BASIS FUJ, DHT Fleet, LNG test, Mideast Gulf master, Mideast VLCC, Short Sea, Singapore, Specialised Tankers M..., Suezmax Master, USG - Afra, VLCC LIST BSS LOOP), and SHARED LISTS. The main area shows a table titled 'Mideast Gulf master' with 52 vessels. The table columns are: Vessel, IMO, Deadweight, R&C, Open location, Open dates (UTC), Estimated ETA, Source, and Last products. A modal window titled 'Add an open position' is open, allowing users to add a new vessel entry with fields for Vessel, Open location, Start date, End date (optional), and Comments (optional). The table data includes vessels like Eileen, Elvita R, Geum Gang, Hyderabad, Jag Pavitra, Kiran China, Portland III, Renad, Golden Convergence, Azalea, Captain Dimitris, Krait, Marina Arung, Octa Divine, Oriental Sakura, Sc Taipei, Yateeka, Yongan Ocean, Marigold, Tg Taurus, Sinar Mendawai, Abram Schulte, Lila Confidence, and Sinar Malahayati.

Vessel	IMO	Deadweight	R&C	Open location	Open dates (UTC)	Estimated ETA	Source	Last products
Eileen	9224714	75,257	✓	Mideast Gulf	28-30 Apr 2025	12/03/2025	User	Steel Other Minor Bulks Co
Elvita R	9395264	53,429	✓	Mideast Gulf	01-05 May 2025	12/03/2025	User	Dry Bulk Coke
Geum Gang	9200603	11,747	✓	Singapore	10 Jun 2025	12/03/2025	AIS	Linear Alkyl Benzene Chem/Bio
Hyderabad	9278789	52,951	✓	King Abdulaziz Por				Dry Bulk Low CV
Jag Pavitra	9387956	51,463	✓	Khor Al Zubair Lig				95 Gasoline Jet A-1 Clean p
Kiran China	9577006	63,549	✓	Hamriya				Iron Ore Concentrate Iron Ore
Portland III	9238545	46,708	✓	Ras Tanura				Minerals Cement Stone
Renad	9310161	45,744	✓	Mideast Gulf				High Sulphur Straight Run Fuel Oil
Golden Convergence	9294678	72,910	✓	Mideast Gulf				Naphtha
Azalea	9399973	6,412	✓	Mideast Gulf				Sulphur Dry Bulk Manganese
Captain Dimitris	9797694	61,245	✓	Mundra				Cement Minor Bulks White
Krait	9622837	56,100	✓	Mideast Gulf				Paraxylene Base Oil Crac
Marina Arung	9291028	15,472	✓	Singapore				Very Low Sulphur Fuel Oil
Octa Divine	9275751	70,313	✓	Jebel Ali				Chemicals Other Chemicals
Oriental Sakura	9743746	16,090	✓	Mideast Gulf				Methanol Vinyl Acetate Monom
Sc Taipei	9175535	22,377	✓	Mideast Gulf	03 May 2025	13/03/2025	AIS	Molasses Chem/Bio Sunflow
Yateeka	9191553	16,020	✓	Mideast Gulf	25 May-05 Jun 2025	13/03/2025	Email	Caustic Soda Chem/Bio Me
Yongan Ocean	9288758	46,803	✓	Mideast Gulf	01 Mar 2025	13/03/2025	User	Vinyl Acetate Monomer Chemyl
Marigold	9221669	11,921	✓	Jubail Industrial Port	10 Jun 2025	15/03/2025	Email	Inorganic Chemicals Methanol
Tg Taurus	9523835	26,199	✓	Jubail Industrial Port	18 Mar 2025	15/03/2025	Email	Paraxylene Phosphoric Acid
Sinar Mendawai	9363857	19,999	✓	Singapore	16-17 Apr 2025	18/03/2025	AIS	Sulphur Coal
Abram Schulte	9624380	61,380	✓	Gladstone	26-28 May 2025	20/03/2025	Email	Methanol Caustic Soda Sul
Lila Confidence	9340427	19,993	✓	Mideast Gulf	20-22 May 2025	20/03/2025	Email	Crude Palm Oil Methanol
Sinar Malahayati	9349643	20,938	✓	Jubail Industrial Port	20-22 May 2025	21/03/2025		

Take advantage of tonnage lists, providing real-time, comprehensive visibility into available vessels across global wet and dry bulk cargo markets. Consolidating key data—including vessel type, size, availability, vessels sanctions and management risk status, emissions ratings, and recent activities—our intuitive platform gives you a complete market view to make faster, more informed decisions.

Leverage the collaborative aspect of the tonnage list where colleagues can seamlessly add vessels and edit key data, ensuring that information remains accurate and up to date. Changes can be tracked in real time, with visibility into who last updated the vessel details, and add notes for improved communication and coordination.

Boost your operational agility with advanced filtering, AIS tracking, market trends, and voyage history, all designed to streamline workflows and enhance transparency. Make smarter, risk-aware decisions and stay competitive.

Personalize your tonnage list with customized views, filter selections, and tailored templates and seamlessly integrated it with your chartering workflows and systems. Adjust criteria such as open dates and location, last port call, beneficial owner, or latest position availability to focus on the most relevant options. Easily export the selected data into an Excel file for external sharing, enabling smooth collaboration with partners and stakeholders.

# Cargo list

**Atlantic Basin Open Cargoes**

Commercial status: Open, On subs | Volume: 20k-270k MT, 30k-180cbm | Lay-Can: next 30 days | Charter type: VOY, TC, TCT

+ Add filter | Hide filters

+ Add order | Match vessels | 2 of 174 cargoes selected | View options

Cargo type	Received	Volume	Lay-Can	Load area	Discharge area	Charterer	Charter type	Commercial st
<input type="checkbox"/> Crude oil	23:58 NOW	270,000 MT	22-25 Mar 2025	Ras Tanura, KSA	Ningbo, China	Unipet	VOY	Open
<input checked="" type="checkbox"/> Iron Ore	23:37 NOW	170,000 MT	24-28 Mar 2025	Port Hedland, AUS	Qingdao, China	VOY	On Subs	...
<input type="checkbox"/> LNG	23:04 NOW	160,000 cbm	20-22 Mar 2025	Sabine Pass, US	Rotterdam, NL	TC	Open	...
<input type="checkbox"/> Thermal Coal	22:49	75,000 MT	01-05 Apr 2025	Richards Bay, ZA	Mundra, India	VOY	Open	...
<input type="checkbox"/> Soybeans	22:11	65,000 MT	26-30 Mar 2025	Santos, Brazil	COFCO	VOY	Fixed	...
<input type="checkbox"/> Petroleum	21:56	55,000 MT	20-23 Mar 2025	Fujairah, UAE	Singapore	TCT	Open	...
<input checked="" type="checkbox"/> Alumina	21:53	30,000 MT	27-31 Mar 2025	Bunbury, AUS	Gladstone, AUS	Alcoa	VOY	Open
<input type="checkbox"/> Wheat	21:24	50,000 MT	21-24 Mar 2025	Novorossiysk, RU	Alexandria, Egypt	VOY	On Subs	...
<input type="checkbox"/> Copper Conc.	21:08	40,000 MT	17-25 Mar 2025	Callao, Peru	Busan, South Korea	Trafigura	VOY	Open
<input type="checkbox"/> Fertilizer	20:18	25,000 MT						Open
<input type="checkbox"/> Diesel Oil	19:46	80,000 MT						Fixed
<input type="checkbox"/> Steel Products	19:38	45,000 MT						Open
<input type="checkbox"/> Palm Oil	19:22	20,000 MT						Open
<input type="checkbox"/> Nickel Ore	19:03	55,000 MT						On Subs
<input type="checkbox"/> Cement Clinker	18:48	35,000 MT						Open
<input type="checkbox"/> LPG	17:49	44,000 cbm						Open
<input type="checkbox"/> Barley	17:28	60,000 MT						Open
<input type="checkbox"/> Sulphur	17:07	30,000 MT						On Subs
<input type="checkbox"/> Gasoline	17:00	60,000 MT						On Subs
<input type="checkbox"/> LNG	17:00	160,000 cbm						Open
<input type="checkbox"/> Thermal Coal	16:42	75,000 MT						Open

Calendar overlay: March 2025 and April 2025. Dates 17, 18, 19, 20, 21, 22, 23, 24, 25 are highlighted.

Gain a competitive edge with high-quality, granular cargo lists, offering a real-time, centralized view of available cargoes to streamline vessel matching. Access detailed insights on cargo type, volume, loading and discharge ports, laycan dates, and chartering contracts options (time charter or voyage charter) —all designed to simplify sourcing and fixture decisions.

Unlock deeper market intelligence with integrated live data and analytics, helping you identify the most profitable opportunities, minimize idle time, and maximize fleet utilization. Filter key shipping parameters to refine results based on your specific needs and give your team clearer market insights.

Enhance collaboration and efficiency by connecting the right cargo with the right vessel at the right time. Stay ahead of the market, boost profitability, and make data-driven fixture decisions with confidence.



# Fixtures

**N. Atlantic fixtures (Next 3 months)**

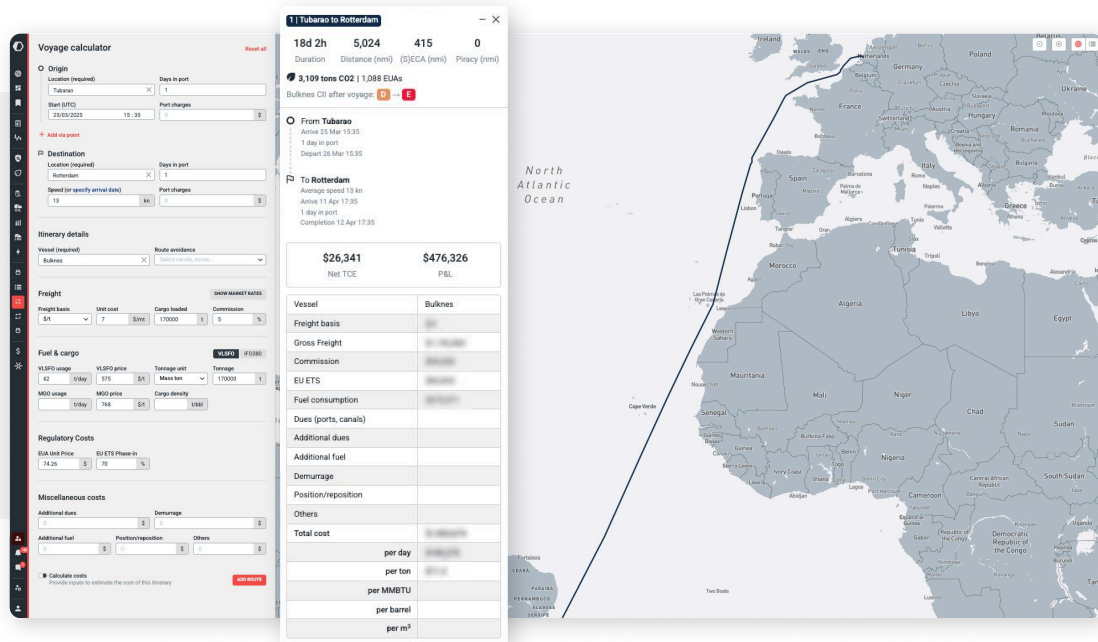
Reported date	Vessel	IMO	Quantity (t)	Product	Charterer	Vessel owner	Laycan start	Laycan end	Origin	Destination	Rates (\$ price)	Status
24 Feb 2025	Kmarin Resolution	9683051	70,000	Crude/Co	Shell/Shell	Ships	15 Feb 2025	15 Feb 2025	Whiffen Head	West of Suez	150	Ready to load
24 Feb 2025	Genco Enterprise	9707699	-	-	-	Ships	15 Feb 2025	15 Feb 2025	Santarem	Oran	150	Ready to load
24 Feb 2025	Bw Chinoak	9689536	-	LPG	Shell/Shell	Ships	15 Feb 2025	15 Feb 2025	Philadelphia	Chiba	150	Ready to load
23 Feb 2025	Berge Townsend	9567063	120,000	Iron Ore	-	Ships Ltd.	15 Feb 2025	15 Feb 2025	Sao Luis	-	150	Ready to load
23 Feb 2025	Kybele Horizon	9839002	250,000	Iron Ore	-	Ships/Starline Co. Ltd.	15 Feb 2025	15 Feb 2025	Sao Luis	-	150	Ready to load
23 Feb 2025	Berge Jaya	9447500	390,000	Iron Ore	-	Ships Ltd.	15 Feb 2025	15 Feb 2025	Sao Luis	-	150	Ready to load
23 Feb 2025	Yuan Sui Hai	9806938	330,000	Iron Ore	-	Ships Ltd.	15 Feb 2025	15 Feb 2025	Sao Luis	-	150	Ready to load
23 Feb 2025	Sea Maranhai	9575515	390,000	Iron Ore	-	Ships Ltd.	15 Feb 2025	15 Feb 2025	Sao Luis	-	150	Ready to load
23 Feb 2025	Aegean Clever	9670066	190,000	Iron Ore	-	Ships/Starline Co. Ltd.	15 Feb 2025	15 Feb 2025	Sao Luis	-	150	Ready to load
23 Feb 2025	Baogang Spirit	9437282	390,000	Iron Ore	-	Ships/Starline Co. Ltd.	15 Feb 2025	15 Feb 2025	Sao Luis	-	150	Ready to load
23 Feb 2025	Ore Salvador	9607945	300,000	Iron Ore	-	Ships Ltd.	15 Feb 2025	15 Feb 2025	Sao Luis	-	150	Ready to load
23 Feb 2025	Shandong Da Ren	9572343	390,000	Iron Ore	-	Ships Ltd.	15 Feb 2025	15 Feb 2025	Sao Luis	-	150	Ready to load
23 Feb 2025	Bao Min	9565510	300,000	Iron Ore	-	Ships Ltd.	15 Feb 2025	15 Feb 2025	Sao Luis	-	150	Ready to load
23 Feb 2025	Sea Ponta De Madeira	9573503	390,000	Iron Ore	-	Ships Ltd.	15 Feb 2025	15 Feb 2025	Sao Luis	-	150	Ready to load
23 Feb 2025	Pacific Excellence	9807009	330,000	Iron Ore	-	Ships/Starline Co. Ltd.	15 Feb 2025	15 Feb 2025	Sao Luis	-	150	Ready to load
23 Feb 2025	Pacific Express	9807724	330,000	Iron Ore	-	Ships/Starline Co. Ltd.	15 Feb 2025	15 Feb 2025	Sao Luis	-	150	Ready to load
23 Feb 2025	Bulk Providence	9400643	170,000	Iron Ore	-	Ships Ltd.	15 Feb 2025	15 Feb 2025	Sao Luis	-	150	Ready to load
23 Feb 2025	Ore Korea	9593969	390,000	Iron Ore	-	Ships/Starline Co. Ltd.	15 Feb 2025	15 Feb 2025	Sao Luis	-	150	Ready to load
23 Feb 2025	Schar Max	9565065	390,000	Iron Ore	-	Ships Ltd.	15 Feb 2025	15 Feb 2025	Sao Luis	-	150	Ready to load
23 Feb 2025	Nsu Xanadu	9802126	260,000	Iron Ore	-	Ships Ltd.	15 Feb 2025	15 Feb 2025	Sao Luis	-	150	Ready to load
23 Feb 2025	Forte Dos Reis Magos	9039084	115,000	Iron Ore	-	Ships Ltd.	15 Feb 2025	15 Feb 2025	Sao Luis	-	150	Ready to load
23 Feb 2025	Ore Hong Kong	9815298	390,000	Iron Ore	-	Ships/Starline Co. Ltd.	15 Feb 2025	15 Feb 2025	Sao Luis	-	150	Ready to load
23 Feb 2025	Ore China	9522972	390,000	Iron Ore	-	Ships/Starline Co. Ltd.	15 Feb 2025	15 Feb 2025	Sao Luis	-	150	Ready to load
23 Feb 2025	Camella Dream	9568017	170,000	Iron Ore	-	Ships Ltd.	15 Feb 2025	15 Feb 2025	Sao Luis	-	150	Ready to load
23 Feb 2025	Pacific Winner	9532616	390,000	Iron Ore	-	Ships/Starline Co. Ltd.	15 Feb 2025	15 Feb 2025	Sao Luis	-	150	Ready to load
23 Feb 2025	Bokm Tianjin	9908607	300,000	Iron Ore	-	Ships Ltd.	15 Feb 2025	15 Feb 2025	Sao Luis	-	150	Ready to load
21 Feb 2025	Chicago Harmony	9755696	34,000	Soybean	Ships Ltd.	Ships Ltd.	15 Feb 2025	15 Feb 2025	Barcelona	-	150	Ready to load

Take control with a powerful tool that centralizes and simplifies fixture tracking and management. Easily log and access key details—including vessel, cargo, freight rates, laycan dates, and statuses—ensuring all essential information is organized and readily available.

Gain a strategic advantage with historical fixture data, providing valuable insights for market analysis, performance evaluation, and smarter negotiations.

Review and filter structured fixtures and stay informed by tracking ongoing commitments while using past data to refine future decisions. Improve efficiency and maintain full control over your fixture portfolio, while managing your chartering workflow in a single platform.

# Voyage calculator

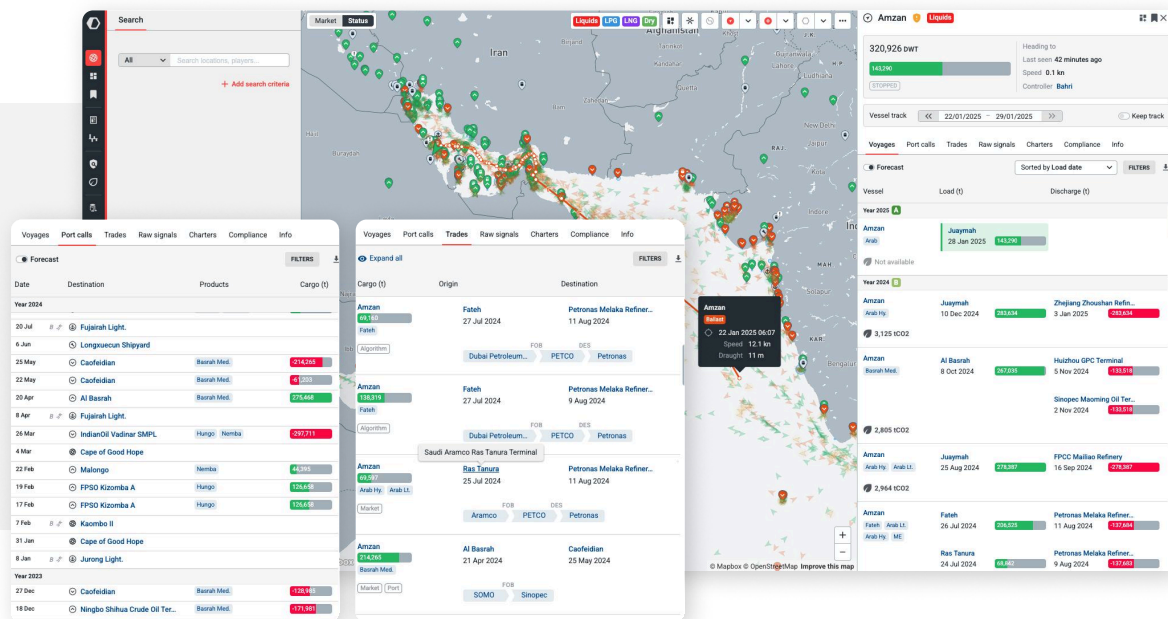


Make data-driven voyage decisions with the voyage calculator, a powerful tool that provides real-time insights into costs, revenues, and Time Charter Equivalents (TCE). Instantly assess voyage economics with key inputs like distance, fuel consumption, port charges, freight rates, and emissions data - all in one intuitive platform.

Customize your analysis by selecting route avoidance and optimizing routing to account for ECA zones and piracy risks, ensuring smarter voyage planning. Compare chartering scenarios effortlessly with the integrated TCE feature, standardizing earnings into a daily rate to help you identify the most profitable opportunities.

Plan voyages with confidence and streamline your chartering process with accurate, up-to-date insights helping you choose the most cost-effective voyage. Connected to live market data, the voyage calculator empowers customers to evaluate fixtures, make informed negotiations, and maximize returns.

# Live map

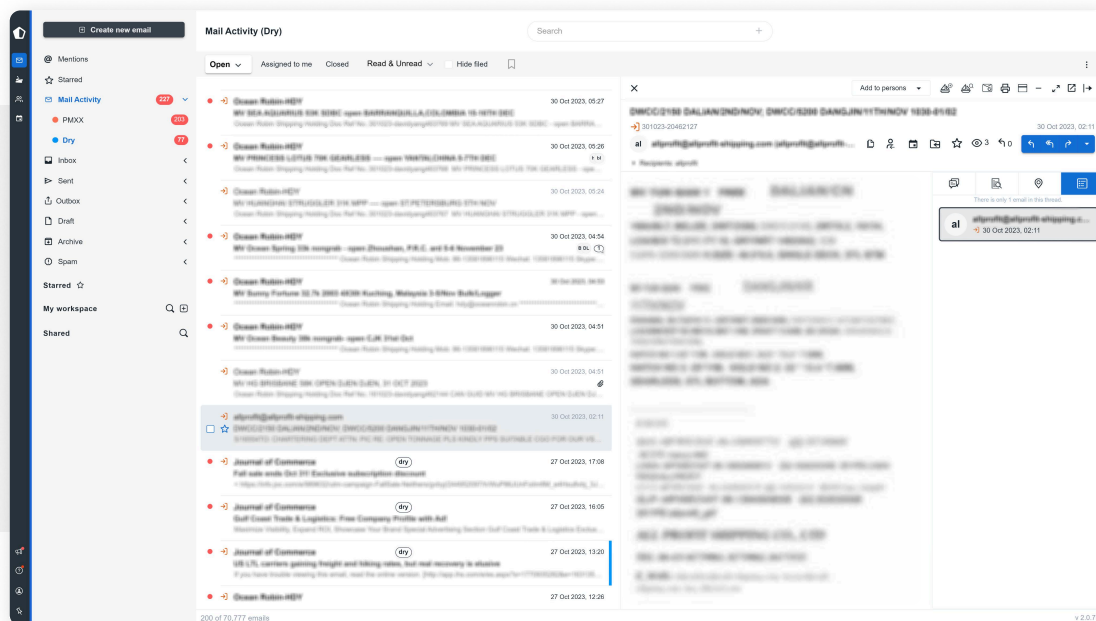


Gain situational awareness with the live map, an interactive tool that provides real-time visualization of global vessel movements. Track ship positions, routes, port calls, and trades, while overlaying key insights such as cargo and charters details, port congestion, status updates and market availability—all in one dynamic view.

Quickly identify opportunities and mitigate risks with advanced filtering options, allowing users to focus on specific vessel types, regions, or operational statuses. Integrated with AIS data, chartering workflows, and commercial intelligence, the live map provides visibility into charters, vessel ownership, operators, and managers, ensuring up-to-date tracking, operational accuracy, and responsiveness to shifting market conditions.

Leverage emissions and compliance data, giving a full regulatory and environmental perspective alongside commercial insights. Whether monitoring a fleet, assessing market availability, or planning logistics, this feature transforms complex shipping data into actionable intelligence—enhancing efficiency and driving smarter decision-making.

# Email parsing



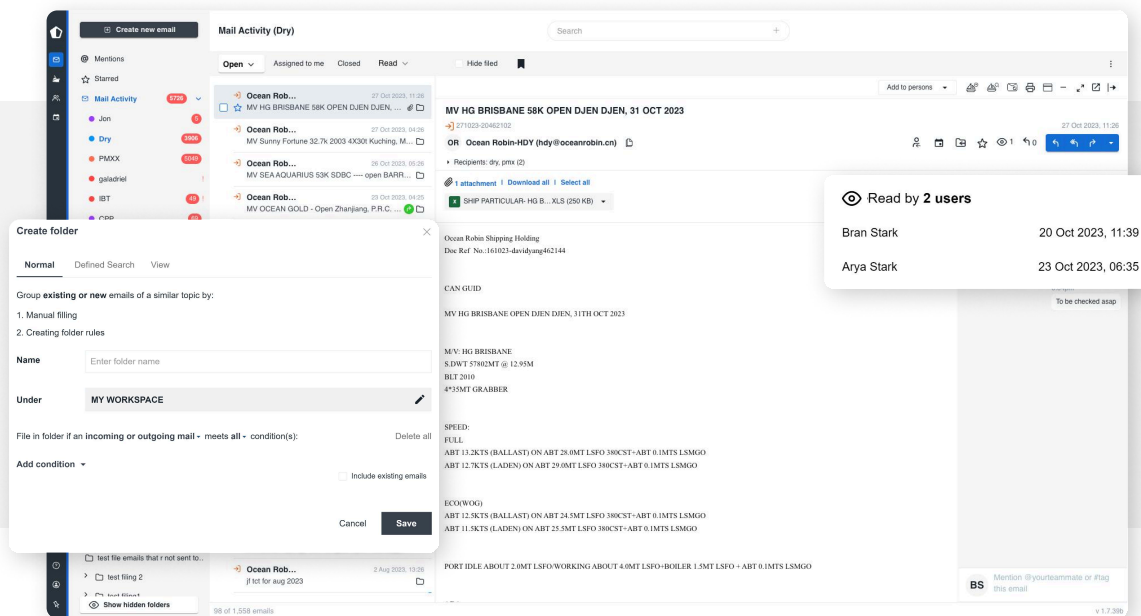
Eliminate manual data entry and streamline operations with email parsing, a powerful feature that automatically extracts and organizes key information from incoming emails. Whether handling freight offers, vessel positions, or cargo requirements, this feature transforms unstructured data into actionable insights, saving time and reducing workload.

Powered by AI and machine learning, the system categorizes and integrates extracted data directly into your workflow, linking it to relevant vessels, charters, or market opportunities. This ensures you never miss a potential match, reducing the risk overlooking the right vessel for your needs.

With real-time updates and seamless integration, email parsing enhances efficiency, reduces human error, and saves time for brokers, charterers, and shipowners. It provides quick access to relevant market information, eliminating the need to spend hours searching through emails, allowing them to focus on high-value tasks.



# Email management - Inbox

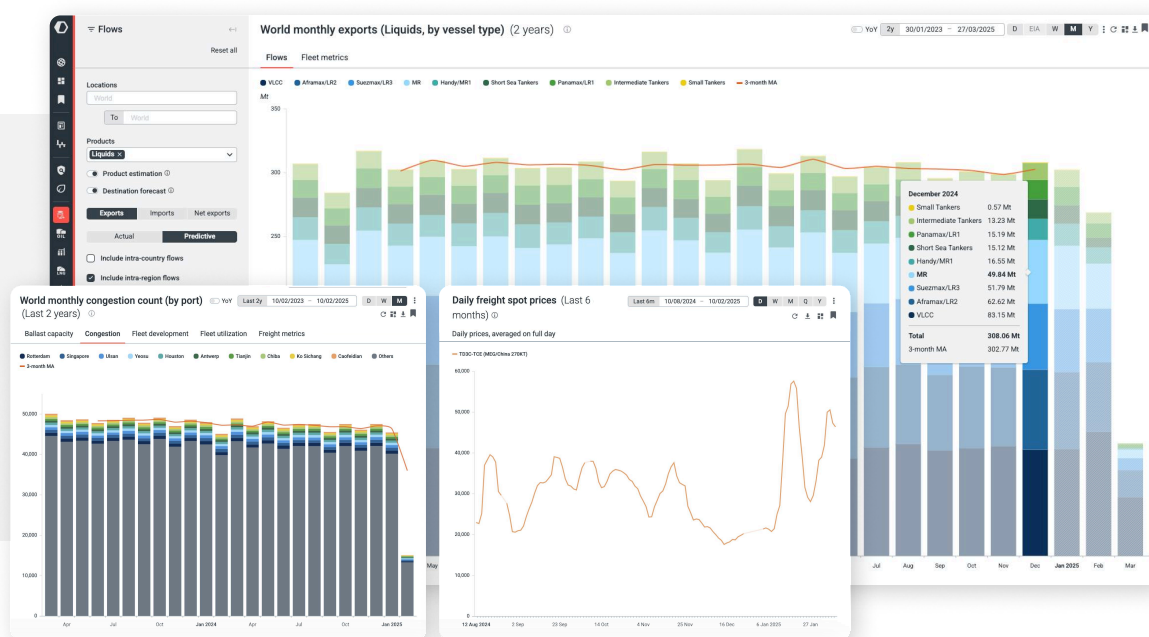


Bring order to the complexity of chartering communication with Kpler's Email Management, a powerful tool that centralizes and organizes all email exchanges related to fixtures, negotiations, and operations. By ensuring seamless collaboration and structured workflows, this feature helps teams stay aligned and work more efficiently.

Fully integrated into existing workflows, emails are automatically categorized, tagged, and linked to relevant vessels, charters, or cargoes—eliminating manual sorting and reducing the risk of overlooked details. Advanced filtering tools provide instant access to critical information, while AI algorithms highlight key terms, deadlines, and action points to minimize miscommunication and missed opportunities.

With shared visibility and collaboration tools, teams can track key negotiations, manage operational updates, and link correspondence directly to voyages. Stay in control, reduce administrative workload, and optimize decision-making with a smarter, more efficient approach to email management.

# Market intelligence



In a fast-moving shipping landscape, having the right insights at the right time makes all the difference. Tap into Kpler's market intelligence, a comprehensive suite of analytical tools – all integrated into a single platform. With optional add-ons tailored to your needs, Kpler's market intelligence empowers brokers, charterers, and shipowners to identify profitable opportunities, mitigate risks, and make optimal data-driven decisions.

**Real-time cargo analytics:** Leverage detailed real-time commodity cargo tracking to capture volumes, product grades, and trades, while monitoring voyages, port calls, and canal crossings to identify shifts in global trade patterns.

**Freight analytics:** Access to a comprehensive database of over 29,500 dry & wet vessels, while utilizing freight utilization, tonnage supply, congestion data and detailed voyage calculator to plan your chartering operations effectively and choose your best routing options.

**Risk & Compliance:** Tap into vessel compliance screening and ensure regulatory adherence with daily updates on sanctioned vessels and entities. Monitor sanctioned cargo movements across 40+ commodities to mitigate risk.

**Emissions:** Gain actionable insights into market players' emission performances by benchmarking your fleet, tracking emissions by vessel type and trade routes, and analyzing EEOI & CII ratings over time. Monitor multiple vessels, compare efficiency, and access key ship design metrics like EEDI and EIV.

**Insight – commodity news & research :** Capitalize on arbitrage opportunities with in-depth and unbiased, expert-driven commodity research and news with daily, weekly, and monthly analysis across two services that are designed to deliver actionable trading and market intelligence.

# How you can benefit

## 01

### **Smarter vessels & cargo matching:**

Easily identify the right vessel for your cargo or the best cargo for your vessel with real-time tonnage and cargo lists. Filtering tools simplify pre-fixture decisions by refining key shipping parameters, providing users with clearer market insights, improved efficiency, and maximized profitability.

## 02

### **Optimized voyage planning & fixtures monitoring:**

Plan profitable voyages with the voyage calculator, which provides real-time insights into costs, revenues, and Time Charter Equivalents (TCEs). Compare scenarios to maximize returns while minimizing risk. Integrated fixture tracking offers full visibility into agreements and past performance, helping users refine negotiation strategies and optimize future deals.

## 03

### **Operational efficiency & workflow automation:**

Reduce manual tasks with email parsing and seamless collaboration tools. By integrating key data - such as freight offers, vessel positions, or cargo requirements - directly into workflows, users can improve efficiency, enhance coordination, and focus on high-value tasks.

## 04

### **Live Monitoring & Risk Management:**

Stay ahead of market fluctuations with live vessel tracking, emissions data, and risk & compliance insights. Whether monitoring fleet movements, evaluating sustainability metrics, or mitigating operational risks, Kpler's solution ensures transparency and control at every stage of the pre-fixture chartering process.

## 05

### **Data-driven decision making:**

Gain a competitive edge with real-time market intelligence and freight analytics. Assess vessel availability, freight rates, compliance, emissions and market trends with confidence, ensuring well-informed strategic and operational decisions.

## 06

### **Seamless communication & collaboration:**

Email management enhance coordination between brokers, charterers, and shipowners. Centralized correspondence, instant search capabilities, and shared visibility ensure smooth negotiations and decision-making.





# Who can benefit

## Ship Owners

Shipowners can enhance fleet utilization, track fixtures, and navigate market volatility with real-time insights. Accessing tools like tonnage and cargo lists, voyage calculator, fixtures, and market intelligence enables data-driven decision-making, helping them adapt to freight fluctuations and maximize fleet utilization as well as profitability. Integrated features such as email parsing and live map tracking improve efficiency, streamline pre-fixing operations, and uncover new opportunities in a competitive market.

## Shipbrokers

Shipbrokers can enhance their services by efficiently matching cargoes with vessels, tracking market trends, and optimizing negotiations with real-time insights. Access to essential tools like tonnage and cargo lists, fixtures data, voyage calculators, prices and market intelligence ensures precision in decision-making. Advanced features such as email parsing and email management streamline their pre-fixing chartering workflows, allowing brokers to stay agile in a fast-moving market and save time while delivering maximum value to their clients.

## Cargo houses/ charterers

Cargo houses and charterers can efficiently manage global commodity shipments with real-time insights and essential tools that simplify logistics. Access to live maps, tonnage and cargo lists, and voyage calculator enables better planning, while fixtures, prices and market intelligence helps assess competitive freight rates and vessel availability. Seamless coordination with brokers and shipowners ensures timely, cost-effective transportation, optimizing both operational efficiency and commercial strategy.



# About Kpler

Kpler is shaping the future of global trade intelligence, empowering businesses to make informed decisions, and creating high-performing products for our valued customers.

Our dedicated team spans the globe, unified by our shared objective of creating a singular platform for global trade intelligence. Each day, we strive to surpass boundaries, leveraging our collective ingenuity and boldness to stay ahead in an ever-changing industry.

The remarkable success of the technology-driven solutions led the industry to ask for more.

Expanding the scope across **40 distinct commodities, including gases, liquids, and dry bulk**, Kpler ventured into new areas of the supply chain to provide a more complete picture of **supply & demand** with **freight** and **inventory data**, as well as **analytics** offerings with research and news.

## | Take the next step

Are you interested in learning more? Our team can take you through a product demo and set you up with a complimentary trial.

[Request a demo](#)

kpler